

Einmal Moodle kreuz und quer!

SwissMoodleMoot 2012 #simmxii

Martin.Voegeli@fh-hwz.ch

Luzern, 2012/09/07

Happy Birthday (1/3) 30 Jahre – Commodore 64



Bild: <http://en.wikipedia.org/wiki/File:Commodore-64-Computer.png>



Happy Birthday (2/3) 20 Jahre – Windows 3.1

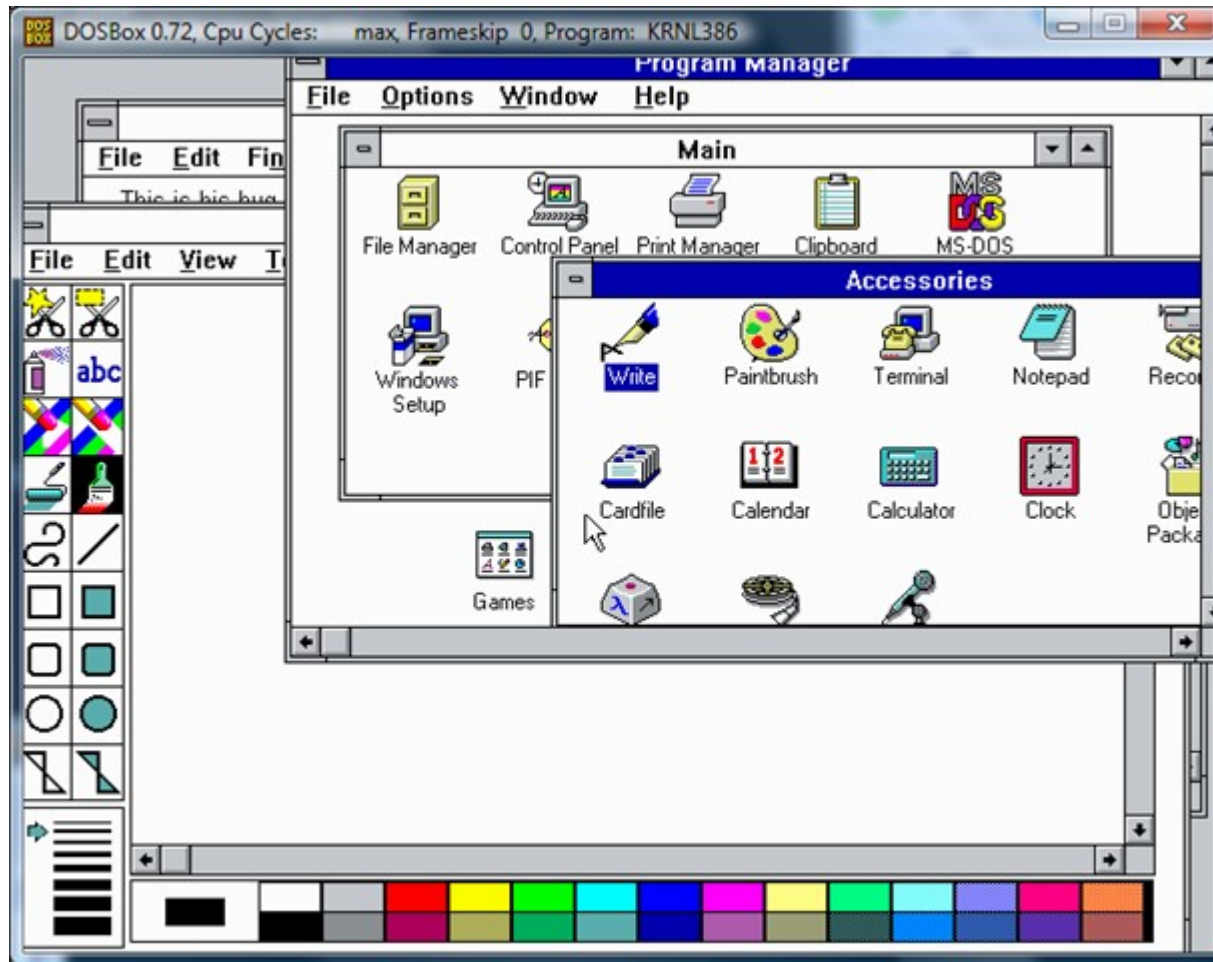


Bild: <http://reparacionesymontajesjsh.blogspot.ch/2012/05/windows-31.html>

Happy Birthday (3/3) 10 Jahre – Moodle :-)

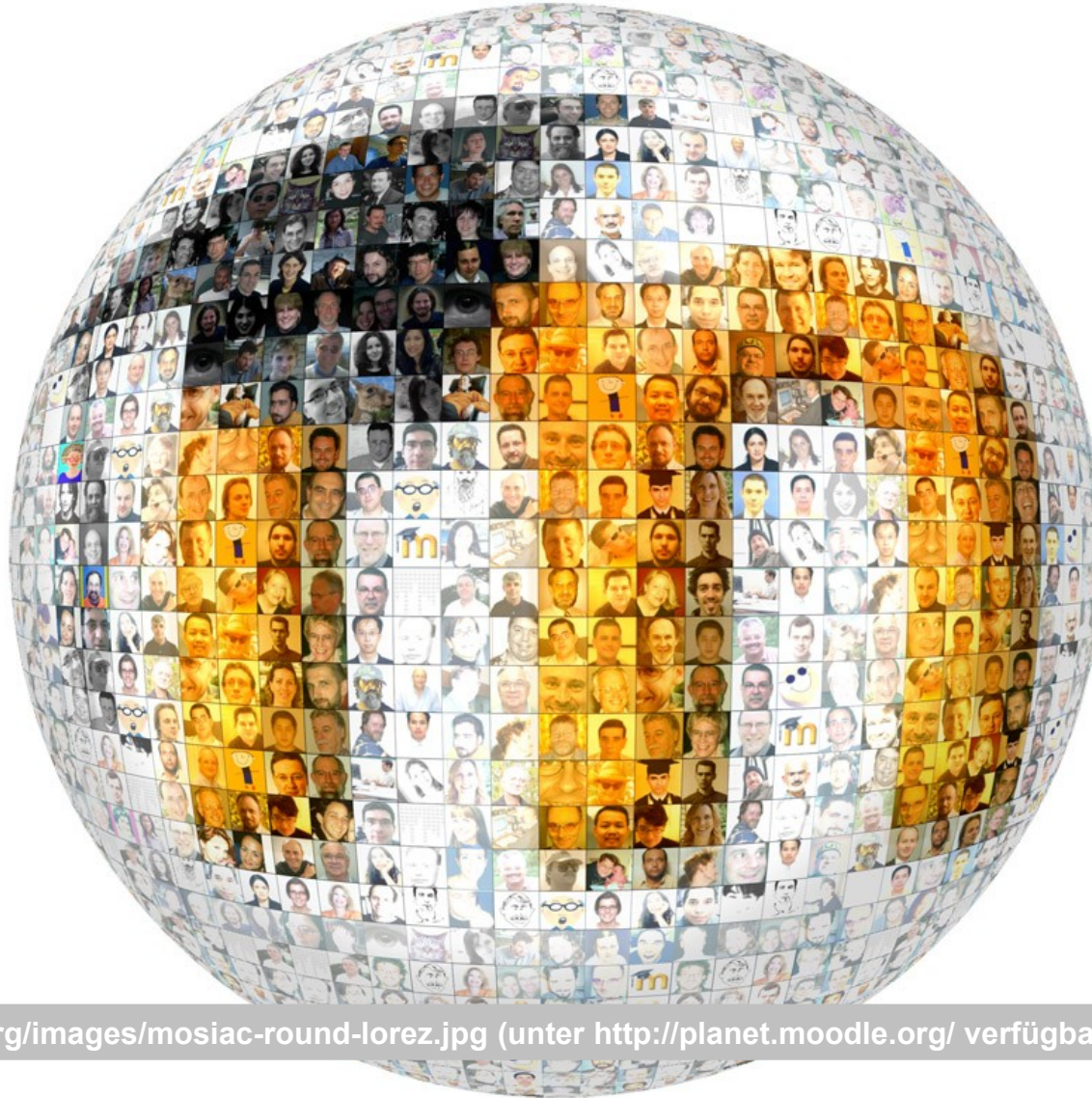


Bild: <http://moodle.org/images/mosaic-round-lorenz.jpg> (unter <http://planet.moodle.org/> verfügbar)



Add-on für Firefox – Compare MoodleDocs

```
1 <h2>Introduction</h2>
2 <h3>Scope</h3>
3
4 <blockquote><ul><li>This article documents how to install Moodle on Debian GNU/Linux
and on distributions based on Debian, specifically Debian 6.0 &ldquo;Squeeze&rdquo;
and Ubuntu Server 10.4 LTS &ldquo;Lucid Lynx&rdquo;. The instructions here should
also be valid for many other Debian and Ubuntu derivatives.</li>
5
6 <li><p>These instructions are generic for all the currently maintained versions of
Moodle, from 1.9 to 2.2. They have also been tested for the discontinued versions
1.6 to 1.8.</p>
7 <p>Update: 30. Apr 2012: Quick check with Ubuntu Server 12.04 LTS 32 bit: Moodle 1.6
is broken, because it asks for MyISAM but MySQL has moved to InnoDB. From Moodle 1.7
onwards installed flawlessly.</p></li>
8
9 <li>A 'stand alone' setup which does not need a network and two levels of
networking, 'LAN only' and 'Internet', are presented here. They are set in table
form as in table below.
10
11 { | class="nicetable"
12 |-
13 ! stand alone
14 ! LAN only
15 ! Internet
16 |-
17 | valign="top" width="33%" | You install Moodle on your Debian based computer so
that it will only be accessible within that computer. This setup is ideal for
testing Moodle and developing courses without going online.
18
19 Of course during the installation and upgrades you must go online.
20
21 We safely assume that your computer runs a graphical interface like Gnome, KDE,
XFCE, etc.
22
23 | valign="top" width="33%" | The Moodle computer will be connected to a private
network, a LAN or a VPN, and allow access to other computers in that network.
24
25 With this setup a whole team can develop courses in collaboration and also give
access to students, as long as all are within the private network.
26
27 Here too the machine must have Internet access during installation and upgrades.
```

```
1 <h2>Introduction</h2>
2 <h3>Scope</h3>
3
4 <blockquote><ul><li>This article documents how to install Moodle on Debian GNU/Linux
and on distributions based on Debian, specifically Debian 6.0 &ldquo;Squeeze&rdquo;
and Ubuntu Server 10.4 LTS &ldquo;Lucid Lynx&rdquo;. The same instructions should
also be applicable across many other Debian and Ubuntu derivatives.</li>
5
6 <li><p>These instructions are generic for all the currently maintained versions of
Moodle, from 1.9 to 2.3. They have also been tested for the discontinued versions
1.6 to 1.8.</p>
7 <p>Update: 30. Apr 2012: Quick check with Ubuntu Server 12.04 LTS 32 bit: Moodle 1.6
is broken, because it asks for MyISAM but MySQL has moved to InnoDB. From Moodle 1.7
onwards installed flawlessly.</p></li>
8
9 <li>A 'stand alone' setup which does not need a network and two levels of
networking, 'LAN only' and 'Internet', are presented in this article. Specific
instructions for those setups are set in table form as in table below.
10
11 { | class="nicetable"
12 |-
13 ! stand alone
14 ! LAN only
15 ! Internet
16 |-
17 | valign="top" width="33%" | You install Moodle on your Debian based computer so
that it will be accessible only within that computer. This setup is ideal for
testing Moodle and developing courses even when the computer is not in the Internet.
18
19 Of course during the installation and later for upgrades you need Internet.
20
21 We safely assume that your computer runs a graphical interface like Gnome, KDE,
XFCE, etc.
22
23 | valign="top" width="33%" | The Moodle computer will be connected to a private
network such as a LAN or a VPN, and only those computers in the private network can
access Moodle.
24
25 With this setup a team can develop courses in collaboration, or run a Moodle for an
institution, as long as all the users are in the private network.
26
27 Here too the machine must have Internet access during installation and later during
upgrades.
```

Bild und Link: <https://addons.mozilla.org/de/firefox/addon/compare-moodledocs/>



Mit Git immer auf dem neuesten Stand bei Moodle

tryGit

```
git clone git://git.moodle.org/moodle.git
```

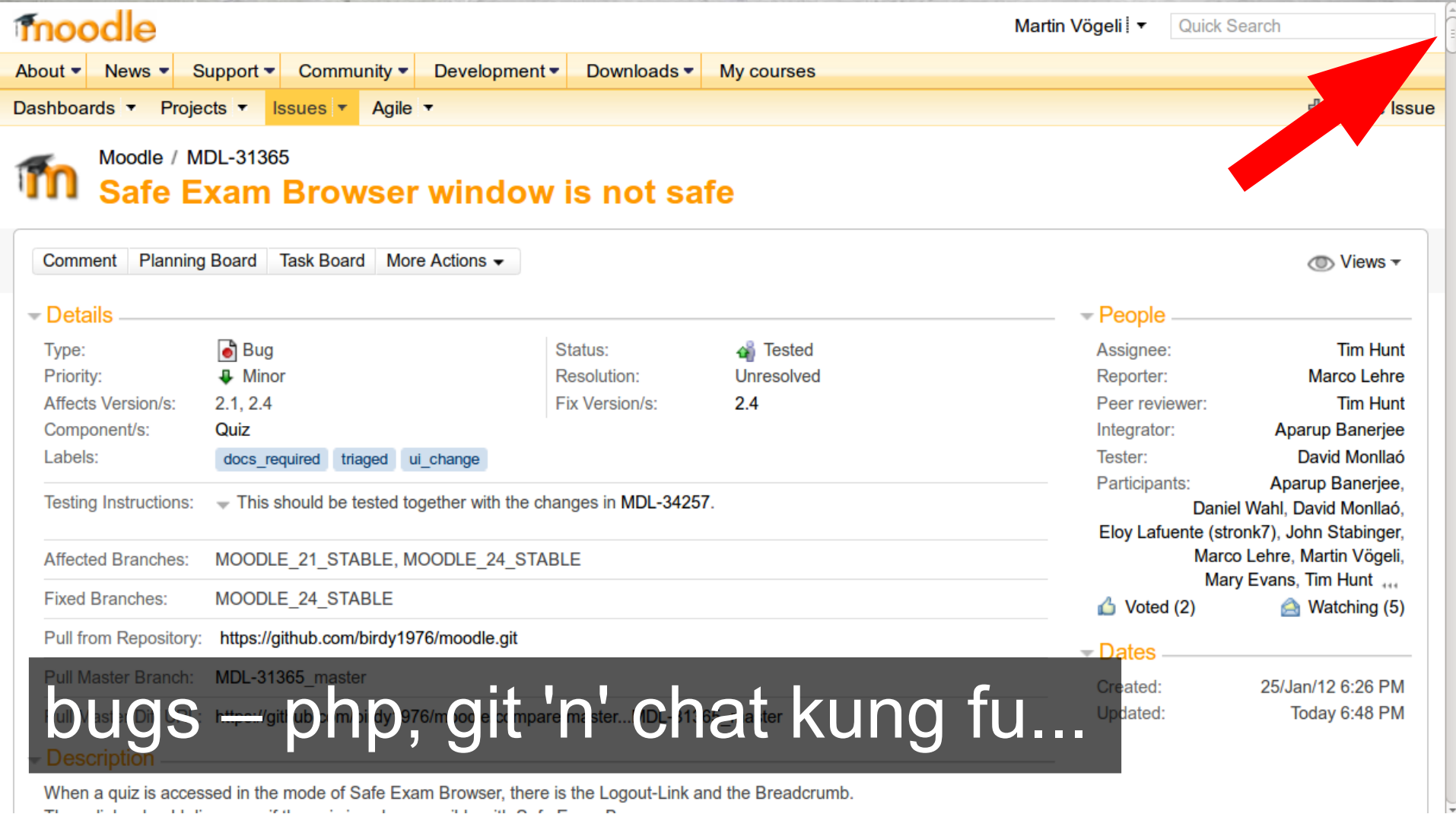


seriously, try it.

Bild und Kurs über Git: <http://www.codeschool.com/courses/try-git>



MDL-31365: Safe Exam Browser (SEB) window is not safe



moodle Martin Vögeli Quick Search

About News Support Community Development Downloads My courses

Dashboards Projects Issues Agile Issue

Moodle / MDL-31365

Safe Exam Browser window is not safe

Comment Planning Board Task Board More Actions Views

Details

Type:	Bug	Status:	Tested
Priority:	Minor	Resolution:	Unresolved
Affects Version/s:	2.1, 2.4	Fix Version/s:	2.4
Component/s:	Quiz		
Labels:	docs_required triaged ui_change		

Testing Instructions: This should be tested together with the changes in MDL-34257.

Affected Branches: MOODLE_21_STABLE, MOODLE_24_STABLE

Fixed Branches: MOODLE_24_STABLE

Pull from Repository: <https://github.com/birdy1976/moodle.git>

Pull Master Branch: MDL-31365_master

Created: 25/Jan/12 6:26 PM
Updated: Today 6:48 PM

People

Assignee: Tim Hunt
Reporter: Marco Lehre
Peer reviewer: Tim Hunt
Integrator: Aparup Banerjee
Tester: David Monllaó
Participants: Aparup Banerjee, Daniel Wahl, David Monllaó, Eloy Lafuente (stronk7), John Stabinger, Marco Lehre, Martin Vögeli, Mary Evans, Tim Hunt ...

Voted (2) Watching (5)

Dates

Description

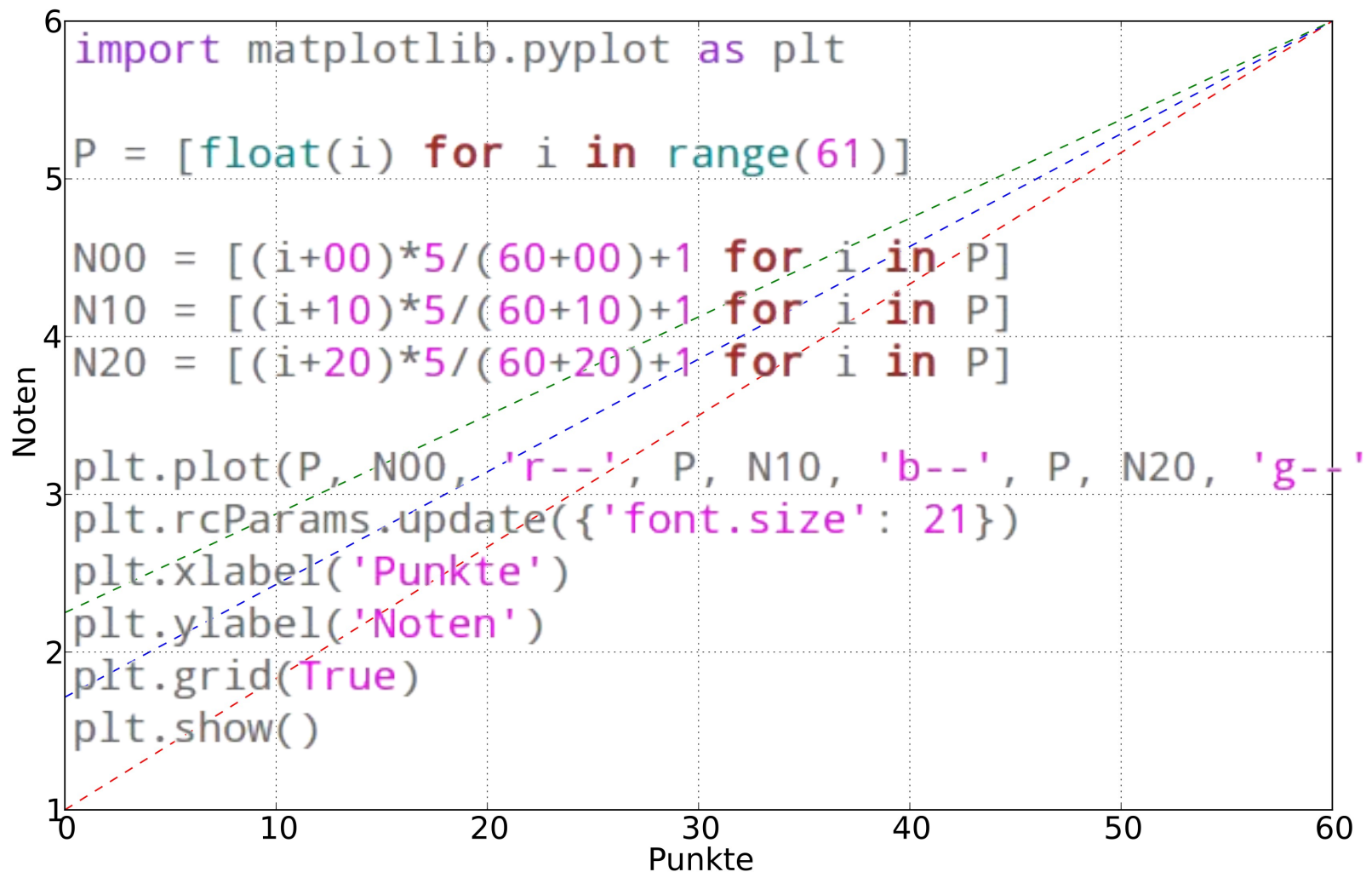
When a quiz is accessed in the mode of Safe Exam Browser, there is the Logout-Link and the Breadcrumb.

bugs — php, git 'n' chat kung fu...

Bild und Link: <http://tracker.moodle.org/browse/MDL-31365>



Notenwirksame Lerntests zur Aktivierung der Lernenden



Plot mit matplotlib (2D-Plot-Bibliothek für Python) erstellt: <http://matplotlib.sourceforge.net/>

Fragen, Anregungen, Hinweise?

martinvogeli@gmx.ch / +41765058503

Skype & Twitter: birdy1976 / Blog: b76.ch

▶ **<http://hwz.edupad.ch/education-for-free>**

▶ **[Moodle Alert] <http://b76.ch/news>**

Open Source Software an Schulen

<http://www.ossanschulen.ch/>

▶ **EB Zürich, 16. März 2013**